

Power Dynamics, Inc.

EV

Electric Vehicle Connectors

Wire Harness

Power Distribution

Charging System

Vehicle Electronics

EV Battery

Motors

L001
Series



Up to 250A

- IP67/IPX9
- Precision Contact
- Single Solid Contact

- High Reliability
- Black or Red

L002
Series

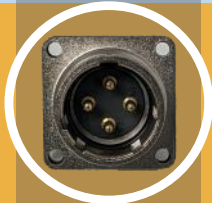


200A to 250A

- IP67/IPX9
- Shielded 360°
- Rugged Use

- Dual Locking
- Multiple Keys
- Die Cast Body

X103
Series



5A to 32A

- IP67/IPX9
- Push/Pull
- 4,6,10 & 12 Contact

- Keyed
- Metal Body
- Compact Size

X104
Series

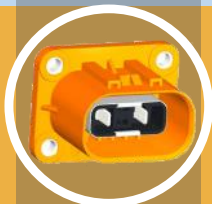


60A to 125A

- IP67/IPX9
- Push/Pull
- Color Coded Body

- Keyed
- Metal Body
- Single Contact

X105
Series



32A to 40A

- IP67/IPX9
- Shielded 360°
- Power & Signal

- Dual Locking
- Rugged Use

X106
Series



23A to 40A

- IP67/IPX9
- Shielded 360°
- Power & Signal

- Dual Locking
- Compact Size

Power Dynamics, Inc.

EV

Electric Vehicle Connectors

Wire Harness

Power Distribution

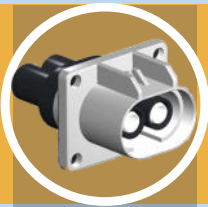
Charging System

Vehicle Electronics

EV Battery

Motors

X107
Series

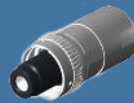


32A to 40A

- IP67/IPX9
- Dual Locking
- Dual Contact

- High Reliability
- Metal Body
- Rugged Use

X108
Series



125A to 250A

- IP67/IPX9
- Shielded 360°
- Single Contact

- Bayonet Lock
- Compact Size
- Metal Body

X109
Series

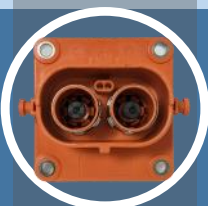


5A to 40A

- IP67/IPX9
- Bayonet Lock
- 4,6,10 & 12 Contact

- Keyed
- Metal Body
- Compact Size

X110
Series



80A to 250A

- IP67/IPX9
- Locks Automatically
- Keyed

- Compact Design
- Glass Filled Nylon
- Dual Contact

X111
Series



80A to 250A

- IP67/IPX9
- Shielded 360°
- Single Contact

- Metal Body
- Rugged Use

X112
Series



175A to 250A

- IP67/IPX9
- Hi-Voltage Interlock
- Front/Rear Install

- Long Service Life
- Maintenance Switch
- Fused Models